



# GAT MONTHLY MEMBERSHIP PROGRESS REPORT

Results as of: 6/30/2023

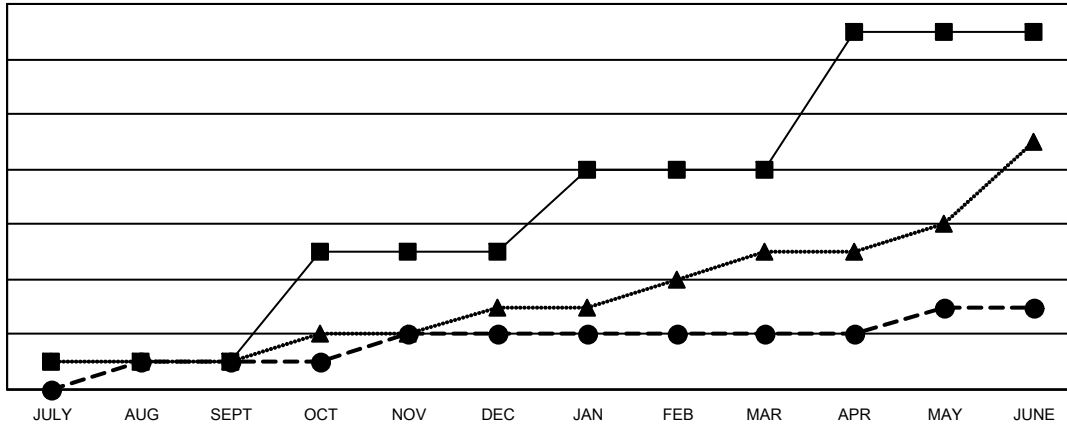
Multiple District 20

LOCATION: NEW YORK

Clubs			
RESULTS FOR 2022-2023			
QUARTER	NEW CLUB GOAL	NEW CLUBS	DROPPED CLUBS
JULY/AUG/SEPT	1	1	4
OCT/NOV/DEC	4	1	6
JAN/FEB/MAR	3	0	0
APR/MAY/JUNE	5	1	8

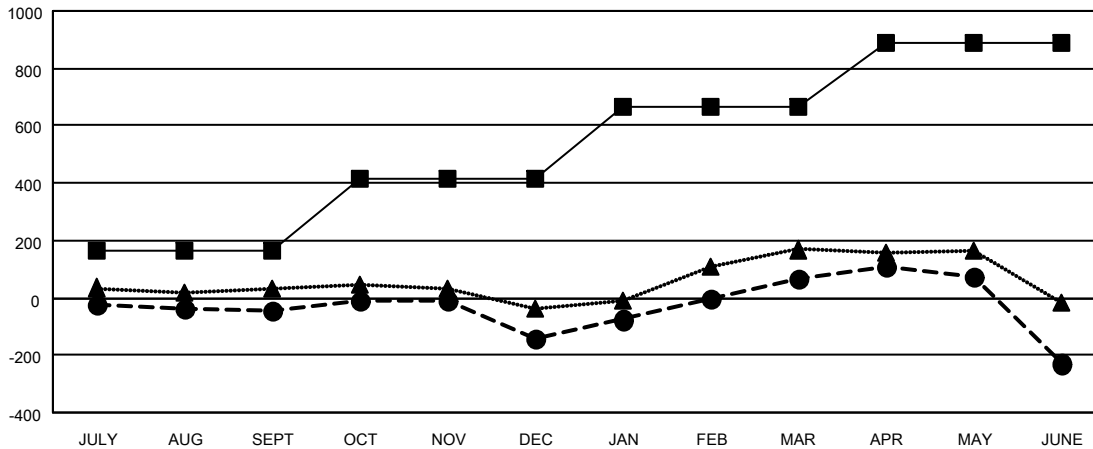
Members			
RESULTS FOR 2022-2023			
QUARTER	MEMBER GROWTH NET GOAL	MEMBER GROWTH ACTUAL	DROPPED MEMBERS ACTUAL (including transfers)
JULY/AUG/SEPT	163	290	307
OCT/NOV/DEC	255	364	440
JAN/FEB/MAR	248	468	236
APR/MAY/JUNE	220	406	669

GOALS AND ACTUAL NEW CLUBS CUMULATIVE



- CURRENT YEAR GOALS FOR NEW CLUBS
- CURRENT YEAR ACTUAL NEW CLUBS
- ▲- LAST YEAR ACTUAL NEW CLUBS

GOALS AND ACTUAL MEMBERS CUMULATIVE



- MEMBER GROWTH NET GOAL
- MEMBER GROWTH ACTUAL
- ▲- LAST YEAR MEMBERSHIP ACTUAL

DROPPED CLUBS: 18	
<b>DROPPED MEMBERS</b>	
DECEASED	160
CLUB CANCELLED	92
OTHER	1,400
<b>TOTAL</b>	<b>1,652</b>

311 CLUBS OF 490 ADDED 1 OR MORE NEW MEMBERS

[CLICK HERE FOR CUMULATIVE MEMBERSHIP DATA](#)

GENDER DISTRIBUTION	
MALE	7,628 (57.85%)
FEMALE	5,535 (41.98%)
NON BINARY	0 (0.00%)
PREFER NOT TO ANSWER	22 (0.17%)
<b>TOTAL FAMILY UNIT MEMBERS</b>	<b>2,363</b>
<b>FAMILY MEMBERS PAYING HALF DUES</b>	<b>1,231</b>